

### Application:

OE series are installed in conduit systems within hazardous areas to:

- protect conductors in threaded rigid conduit
- act as pulling and splice fittings
- interconnect lengths of conduit
- change direction of conduit
- provide access for maintenance and future system changes

### Features:

- OE conduit outlet bodies have:
- taper threaded hubs for ground continuity
  - smooth integral hub bushings to protect conductor insulation when pulling
  - five different hub arrangements
  - accurately machined body with blind tapped screw holes
  - most compact design of all hazardous area outlet bodies

### Standard Materials:

- Feraloy® iron alloy (1/2" and 3/4" fittings)
- Copper-free aluminum (1" fittings)

### Standard Finishes:

- Electrogalvanized and aluminum acrylic paint

### Options:

- Corro-free™ epoxy powder coat. . . . . add suffix - S752

### Size Ranges:

- Hub - 1/2" to 1"

### Certifications and Complies:

- NEC/CEC:  
 Class I, Division 1 & 2, Groups C,D  
 Class II, Division 1, Groups E,F,G  
 Class II, Division 2, Groups F,G  
 Class III
- UL Standard: 886
- CSA Standard: C22.2 No. 30



### OEC

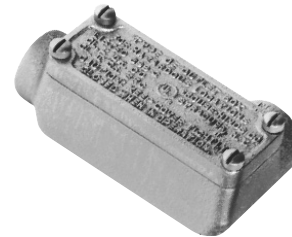
Hub Size	Cat. #
1/2	OEC1
3/4	OEC2
1	OEC3-SA

### OELL

Hub Size	Cat. #
1/2	OELL1
3/4	OELL2
1	OELL3-SA

### OET

Hub Size	Cat. #
1/2	OET1
3/4	OET2
1	OET3-SA



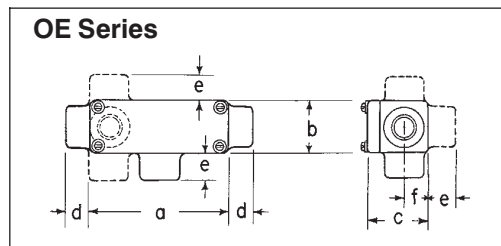
### OELB

Hub Size	Cat. #
1/2	OELB1
3/4	OELB2
1	OELB3-SA

### OELR

Hub Size	Cat. #
1/2	OELR1
3/4	OELR2
1	OELR3-SA

### Dimensions



Hub Size	a	b	c	d	e	f
1/2	4 1/16	1 9/16	1 13/16	1 1/16	7/8	5/8
3/4	4 5/16	1 7/8	2 1/16	1 1/16	7/8	3/4